

SPRAYON

don't say it, spray it!

Lifestyle Colour Chart



Around the home, in the workshop, at school, in the office, in fact just about anywhere, Sprayon spray paint is the brightest way to add colour to your life.



Are you thinking about purchasing a new lamp or light fixture? Are you tired of the old rusty bicycle you have and think you should replace it? Before you spend money on a new light fixture or trash your old bike, see if a can of Sprayon spray paint might be able to save you some money and solve some of your home improvement project dilemmas.

For a child's dresser, paint the drawers a different color than the rest of the dresser. Using stencils and painters tape, mask off areas for fun shapes or designs to be painted.

The home decorating possibilities are endless. All over your home there are items that could be updated or beautified with a little TLC from a can of Sprayon spray paint. Rather than spend hundreds of Rands replacing fixtures, invest in a can of spray paint and you will be amazed at the beautiful results.



Sprayon vinyl paint is an outstanding product for restoring plastic items such as outdoor furniture. Available in a wide range of colours plus metallics, hammer finish, dayglow colours, primers and clear coats. Sprayon spray paint is just right for any DIY job.



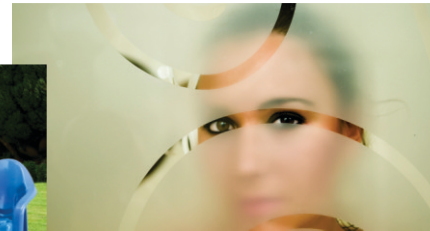
SPRAYON

don't say it, spray it!

SPRAYON PRODUCTS (PTY) LTD
 222, 2nd Street, Wynberg, Gauteng
 Tel: 011-440-2202/3
0861SPRAYON (08617772966)

www.sprayon.co.za

Spray paint is an easy and inexpensive way to improve many of the items around your home. The wide variety of colours including fluorescent, clear coats and hammer finishes, makes the do-it-yourself options practically endless. We even have a paint to help you create a frosted glass effect!



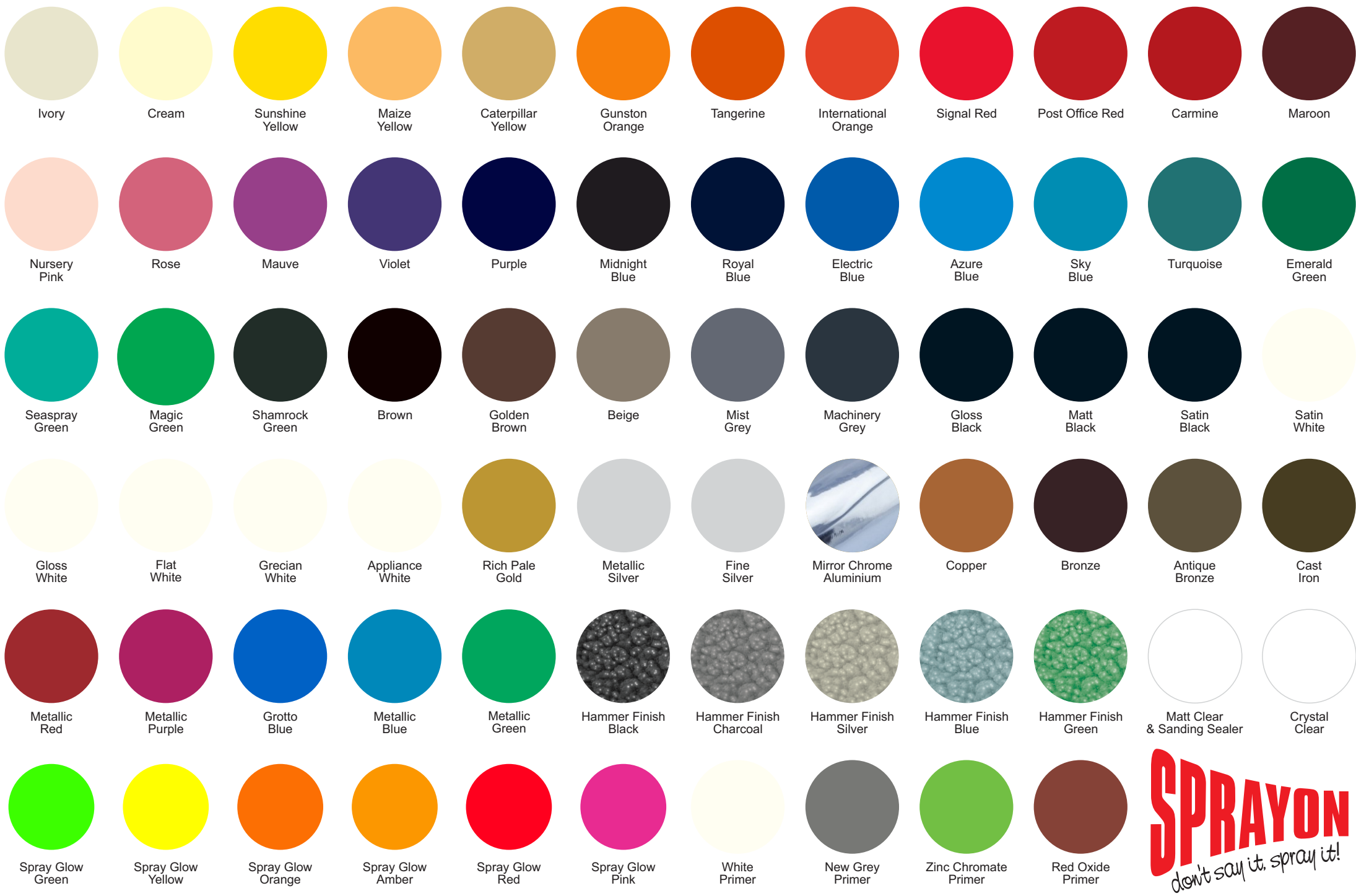
SPRAYON

don't say it, spray it!

Lifestyle Colour Chart



www.sprayon.co.za



Disclaimer: This colour chart is for reference only and is not to be used for final colour matching. Shades may vary due to factors beyond our control and it is advisable to spray a small test piece before committing the entire contents of the can. Sprayon is not responsible or liable for colour matches made with this reference chart.

